



Installation & Updating Guide

Version: 2010 Release 1



The Chemical Company

For assistance with SmartColor[®] III, please call the Help Desk at

1-800-227-3593 option #2

For more information about BASF products and services, please visit us at

www.basfrefinish.com

Copyright © 2010

BASF Corporation

Automotive Refinish Division

26701 Telegraph Rd.

Southfield, MI 48034

Trademarks of BASF Corporation:

SmartColor[®] III

SmartSCAN[®]

Glasurit[®]

R-M[®]

UNO HD[™]

Onyx HD[™]

Diamont[™]

Limco[®]

COLOR-MAX[®]2

COLOR-MAX[®] Mobile

Basfrefinish.com

Bodyshopmall.com

All other products mentioned in this documentation are trademarks of their respective companies.



SmartColor® III Installation & Updating Guide

The purpose of this document is to serve as a guide for the installation & updating of SmartColor® III. The steps outlined just below will walk you through both a full installation and an upgrade of SmartColor® III software. If you experience any difficulty, please call the SmartColor® III Help Desk at **800-227-3593** for assistance.

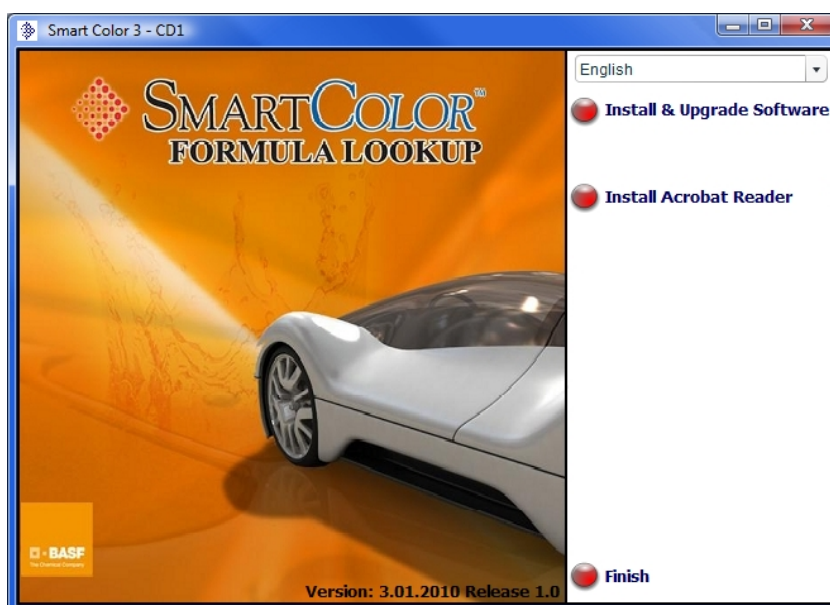
The first step to installing SmartColor® III is to **put Disk #1 in the CD-ROM drive.**

Most PC's are configured to automatically open the main installation menu of SmartColor® III, but if your computer displays the following dialog box instead, click on the option **“Run SoftwareAutorun.exe”**. This will open the Main Installation menu (shown below).

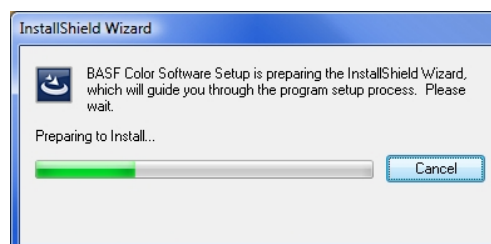


When the Main Installation Menu opens, click on **“Install & Upgrade Software”**.

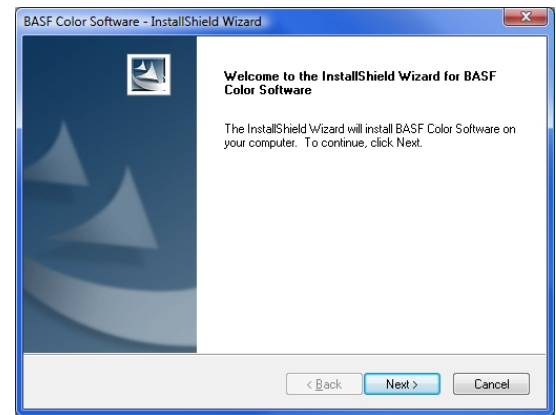
The installation wizard will do a full installation or an update depending on whether or not a previous version of SmartColor® III is detected on your PC. There are virtually no differences in the screens that are displayed during the full installation and upgrade processes.



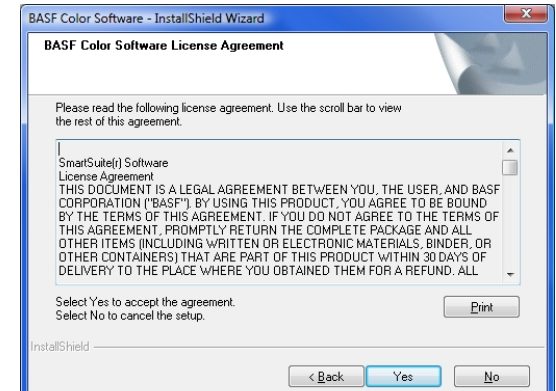
Upon clicking **“Install & Upgrade Software”** the following window will open briefly.



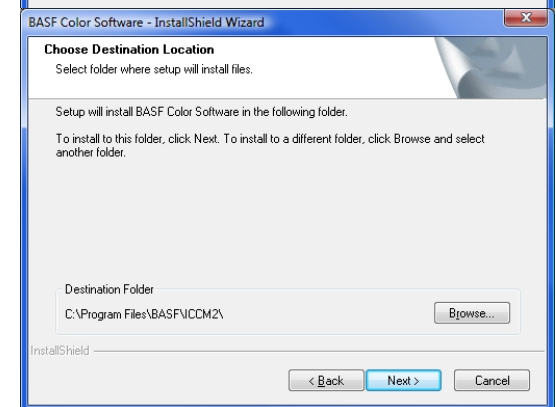
When the window shown to the right is displayed, click on “Next” to continue.



The license agreement is then displayed. Click on “Yes” to continue.



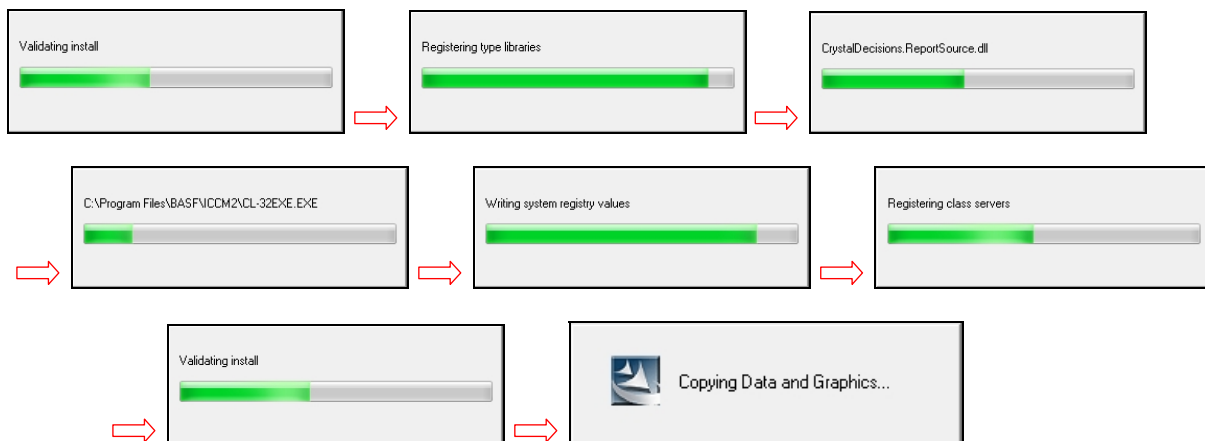
The default installation location is then displayed with the option to change it. The Help Desk recommends leaving this setting as it is and continuing on by clicking “Next”.



If an update is being performed, the following message may be displayed briefly:



When the installation begins, you will see the following windows open in quick succession as the installation progresses.



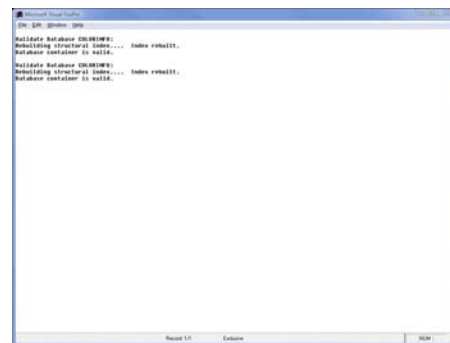
When the window that displays “Copying Data and Graphics” is open, you will see one or more black windows open up to unpack the Color Information Database (shown right).

```

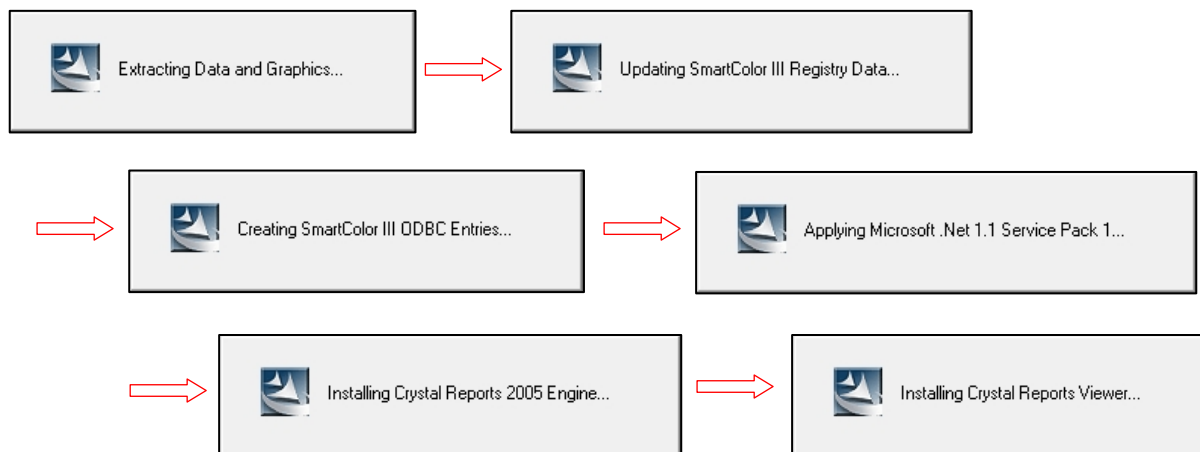
C:\Program Files\PKWare\Shareware\PKZip25.exe
Inflating: C:\Program Files\BASF\ICCM2\DataNA\casmaster.DBF
Inflating: C:\Program Files\BASF\ICCM2\DataNA\category.CDX
Inflating: C:\Program Files\BASF\ICCM2\DataNA\cmx_oem1.DBF
Inflating: C:\Program Files\BASF\ICCM2\DataNA\cmx_oem1.dbf
Inflating: C:\Program Files\BASF\ICCM2\DataNA\Code39.dbf
Inflating: C:\Program Files\BASF\ICCM2\DataNA\CodeChange.dbf
Inflating: C:\Program Files\BASF\ICCM2\DataNA\col_usg0.CDX
Inflating: C:\Program Files\BASF\ICCM2\DataNA\col_usg0.dbf
Inflating: C:\Program Files\BASF\ICCM2\DataNA\colcombo.CDX
Inflating: C:\Program Files\BASF\ICCM2\DataNA\colcombo.DBF
Inflating: C:\Program Files\BASF\ICCM2\DataNA\colorcomments.CDX
Inflating: C:\Program Files\BASF\ICCM2\DataNA\colorComments.dbf
Inflating: C:\Program Files\BASF\ICCM2\DataNA\colorinfo.dbc
Inflating: C:\Program Files\BASF\ICCM2\DataNA\colorinfo.DCT
Inflating: C:\Program Files\BASF\ICCM2\DataNA\colorinfo.DCX
Inflating: C:\Program Files\BASF\ICCM2\DataNA\colortypes.dbf
Inflating: C:\Program Files\BASF\ICCM2\DataNA\comment0.CDX
Inflating: C:\Program Files\BASF\ICCM2\DataNA\comment0.dbf
Inflating: C:\Program Files\BASF\ICCM2\DataNA\comp0.CDX
Inflating: C:\Program Files\BASF\ICCM2\DataNA\comp0.dbf
Inflating: C:\Program Files\BASF\ICCM2\DataNA\f_mast022.CDX
Inflating: C:\Program Files\BASF\ICCM2\DataNA\f_mast022.DBF
Inflating: C:\Program Files\BASF\ICCM2\DataNA\f_mast055.CDX
Inflating: C:\Program Files\BASF\ICCM2\DataNA\f_mast055.DBF
  
```

During the installation process, the black windows that unpack the database may open, and then close in very rapid succession at times. There may also be some moments where the system seems to pause as it reads from the CDROM drive. ***Please do not close out of any windows or finish out of the installation prematurely.*** If you encounter any sort of trouble during the installation, please leave any errors open on the screen, then call the SmartColor Help Desk at **800-227-3593** for further assistance.

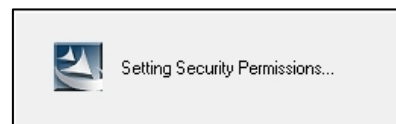
If an *upgrade* to a new version of SmartColor[®] III is being performed, you may briefly see a few windows similar to the one shown on the right. These windows are reindexing the database and will close out on their own as the update continues.



The installation process will continue as the following screens are displayed.



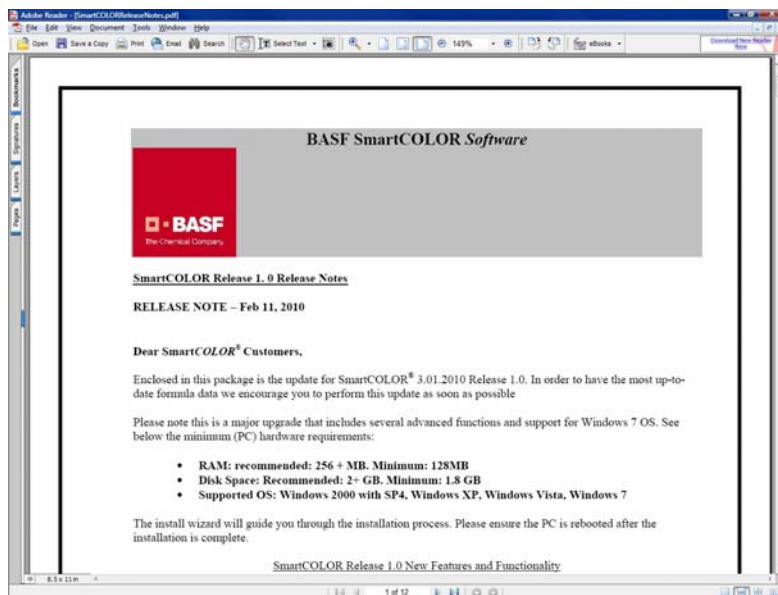
The last screen displayed prior to the automatic opening of the SmartColor[®] III Release Notes is shown just to the right.



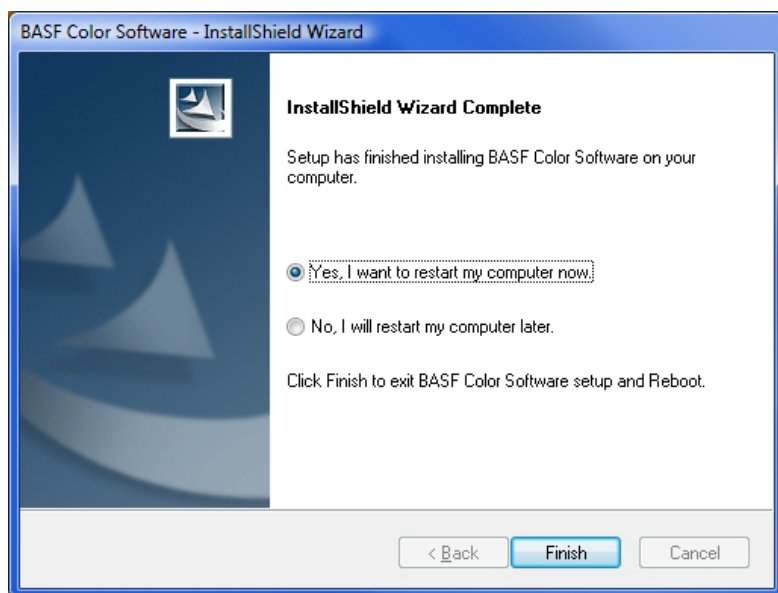
Occasionally, the SmartColor[®] III Release Notes will open *behind* the window that displays “Setting Security Permissions”. If this happens, click anywhere on the SmartColor[®] III Release Notes to bring them to the foreground.

At the end of the installation, the SmartColor^{®III} Release Notes will show the latest updates and enhancements that have been made to that particular version of SmartColor.

Once you've finished reading them, please **close the Release Notes using the "X" in the upper right.**



After closing the SmartColor^{®III} Release Notes, the following window will be displayed. Prior to using SmartColor^{®III}, the PC ***must*** be restarted to finish the installation properly. Please click on **“Yes, I want to restart my computer now”** to do so immediately. If you have other programs that you need to close out prior to rebooting the PC, you may select the option **“No, I will restart my computer later”**, then reboot at your first convenience.



The installation of SmartColor^{®III} is complete upon returning to the Windows desktop after restarting the PC at the end of the installation. You may now begin to use SmartColor^{®III} as you otherwise normally would. If you've experienced any difficulty during the installation process or require further assistance, please call the SmartColor^{®III} Help Desk at **800-227-3593**.