

KLINE'S

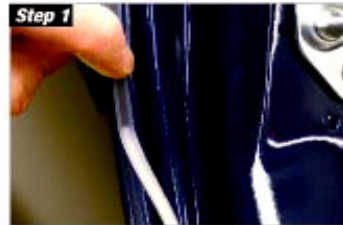
auto inc.

3M™ Smooth Transition Tape User Instructions.

The fast, easy way to virtually eliminate rework caused by hard paint lines and sealer creep.



Door, fender and quarter jambs



Step 1
Apply the first strip, following and aligning the outside body line of the jamb with the outer edge of the tape.



Step 2
Extend tape onto adjacent masking.



Step 3
Apply a second strip of tape that overlaps the inner edge of the first strip.



Step 4
Apply additional masking material behind the strips to prevent overspray.



Step 5
Apply initial coatings. (For sealer/color/clear application, apply sealer and one color. For color/clear application, apply all color coats.)



Step 6
After the initial coatings have dried, grip the tab and remove the outer strip of tape. Pull tape back on itself and directly out of the jamb.



Step 7
Apply the remaining coatings. Leave last strip in place until bake cycle is completed.

Outside body lines



Step 1
Apply tape to the body line. Use additional masking material to protect the rest of the panel from overspray.

Stone chip coatings



Step 1
Apply tape exactly where the stone chip coating should transition. Use additional masking material above tape to protect the rest of the panel from overspray.

3M
Automotive Aftermarket Division
3M Center, Building 223-6N-01
St. Paul, MN 55144-1000
USA
www.3m.com/smoothtransition



Please Recycle

3M is a trademark of 3M.
The NASCAR Performance logo is a registered trademark of the National Association for Stock Car Auto Racing, Inc.
Aftermarket Rewards is a registered trademark of Aftermarket Rewards, Portland, USA.
© 2012 3M. 3M 9019-3103-0

KLINE'S – KEEPING YOU INFORMED

ALLENTOWN: 1-610-433-3203 / HAZLETON: 1-570-454-7616 / PHILLIPSBURG: 1-908-859-5911
POTTSVILLE: 1-570-622-4010 / READING: 1-610-929-4737 / SCRANTON: 1-570-344-8516
STROUDSBURG: 1-570-424-2253