



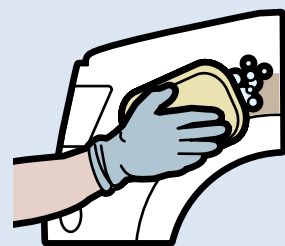
DuPont™ Cromax® Pro

High-performance paint repair system that delivers exceptional results.



The miracles of science™

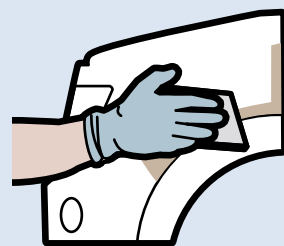
1 Surface preparation



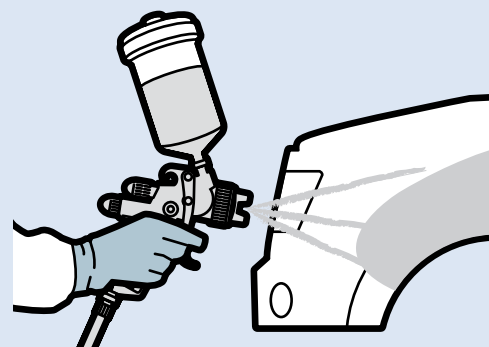
A Wash surface.



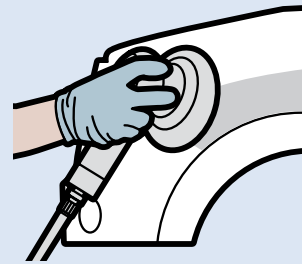
B Pre-clean surface with degreaser.



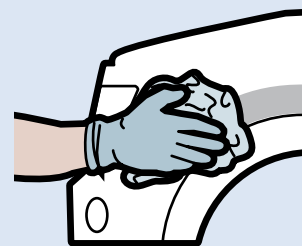
C Repair damage as needed prior to primer.



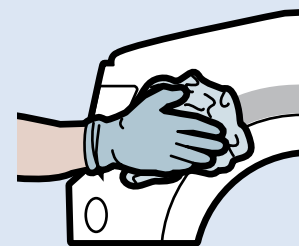
D Apply two-component primer surfacer.



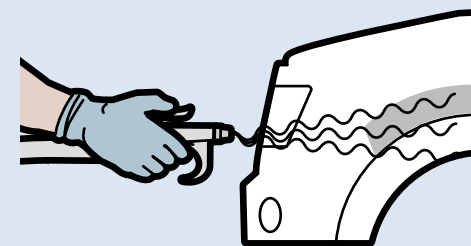
E Sand primer surface. Dry: mechanical P500 hand P600 Wet: P800 or finer.



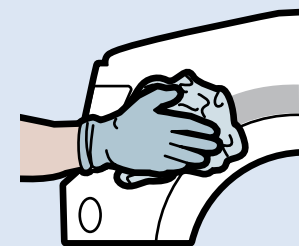
F Degrease surface.



G Dry clean surface.



H Air blow surface.



I Tack wipe surface.

2 Color preparation

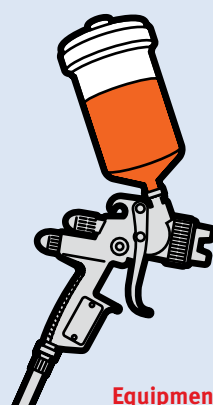


A Prepare color according to formula and reduce according to Technical Data Sheet. Use plastic or lined mixing container and only use plastic mixing sticks.

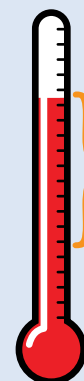


B After mixing, filter through a nylon 125 micron strainer.

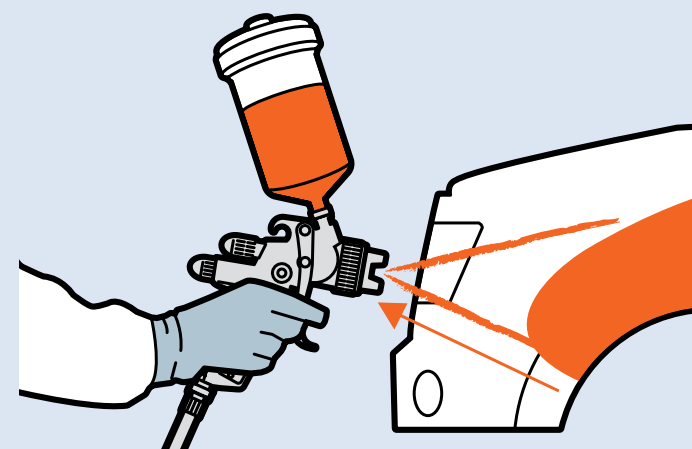
3 Basecoat application



Equipment Use HVLP spray gun.



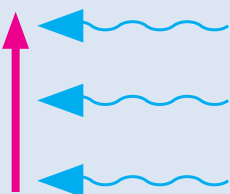
Best conditions:
60°–90°F
(16°–32°C)
@ 25–50% humidity



A Application of Cromax® Pro is wet-on-wet. Apply 1.5 coats, one after the other.

B Apply the first coat to 75% opacity and the second coat (half coat) to complete hiding and to set the flake.

4 Drying

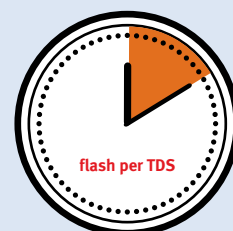
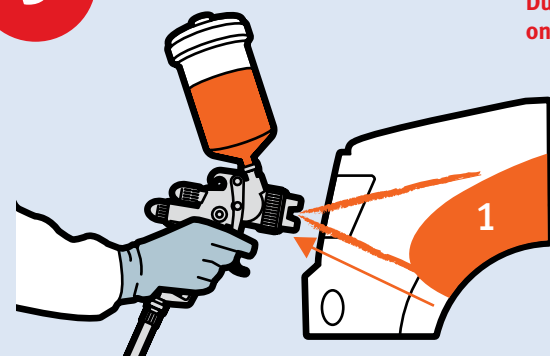


Drying enhancement

- Increase airflow: Portable blower or venturi
- Temperature increase: infrared system
- Combined heat and accelerated airflow

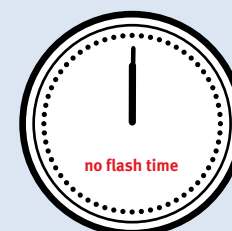
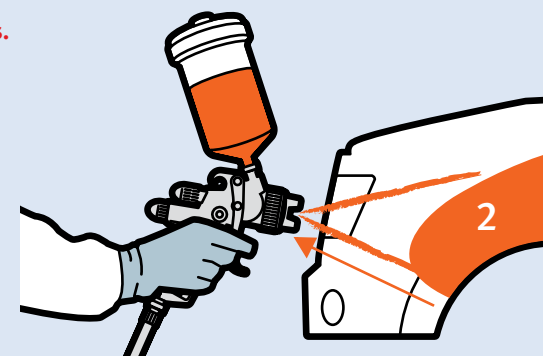
5 Clearcoat application

DuPont™ Cromax® Pro works equally well on both compliant and non-compliant clears.



flash per TDS

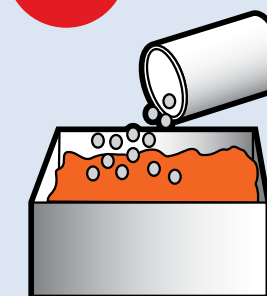
A Apply two coats directly over Cromax® Pro. Flash between coats according to specific Technical Data Sheet.



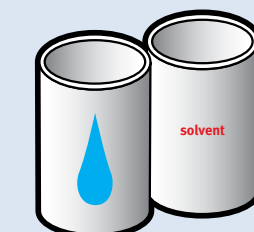
no flash time

B No flash before bake.

6 Waste treatment



A Coagulate polluted water with WB2099™.



B Keep waterborne paint waste in a separate container away from solvent borne paint waste.