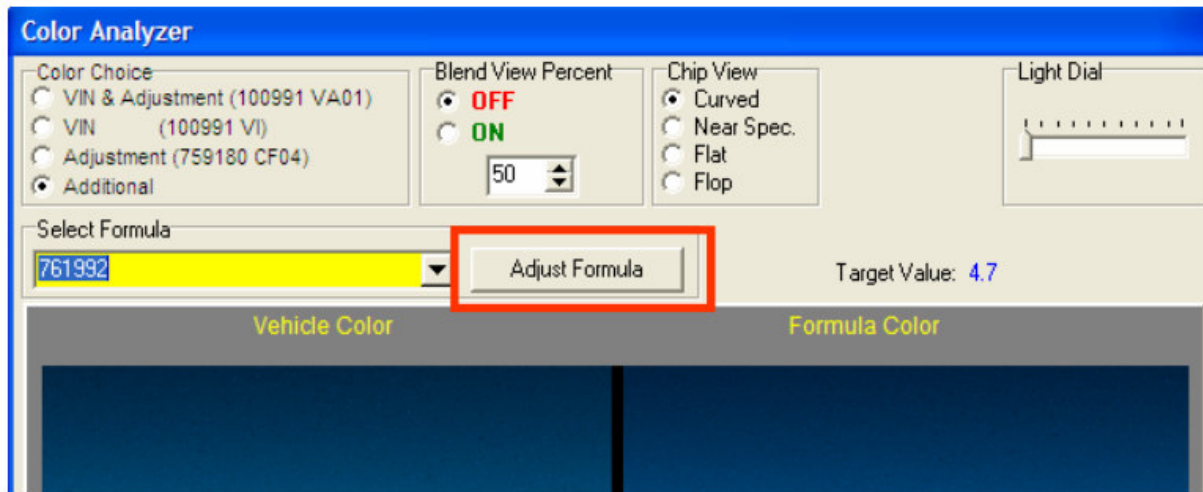


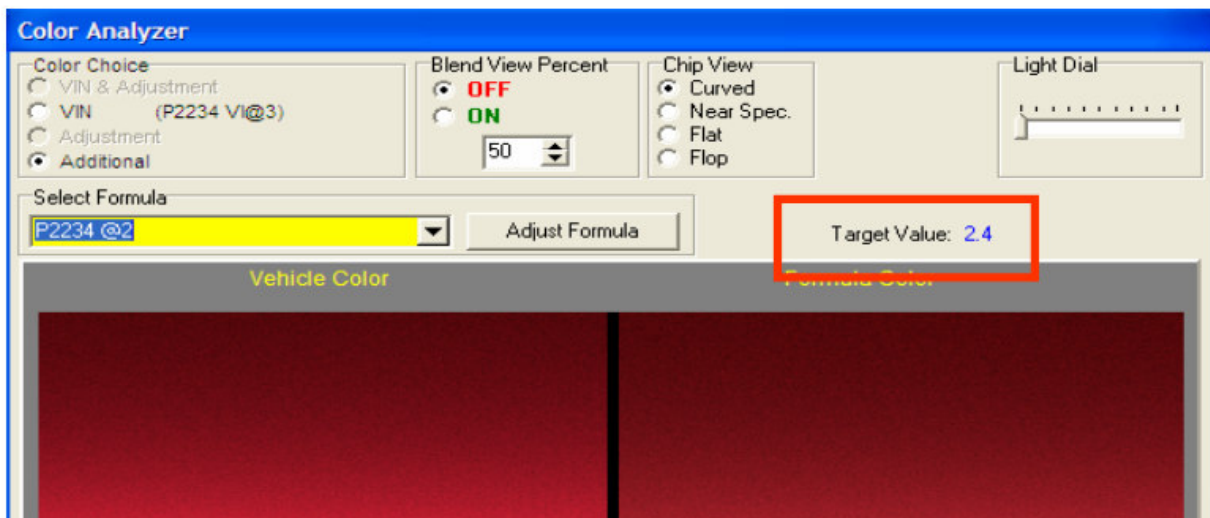
Color Proofing-Formula Adjustment



- When a user picks an “additional alt” from the drop down box, he will now be able to adjust the formula when using Color Proofing. Simply select a formula and click on the “adjust formula” and ColorNet will adjust that specific formula.



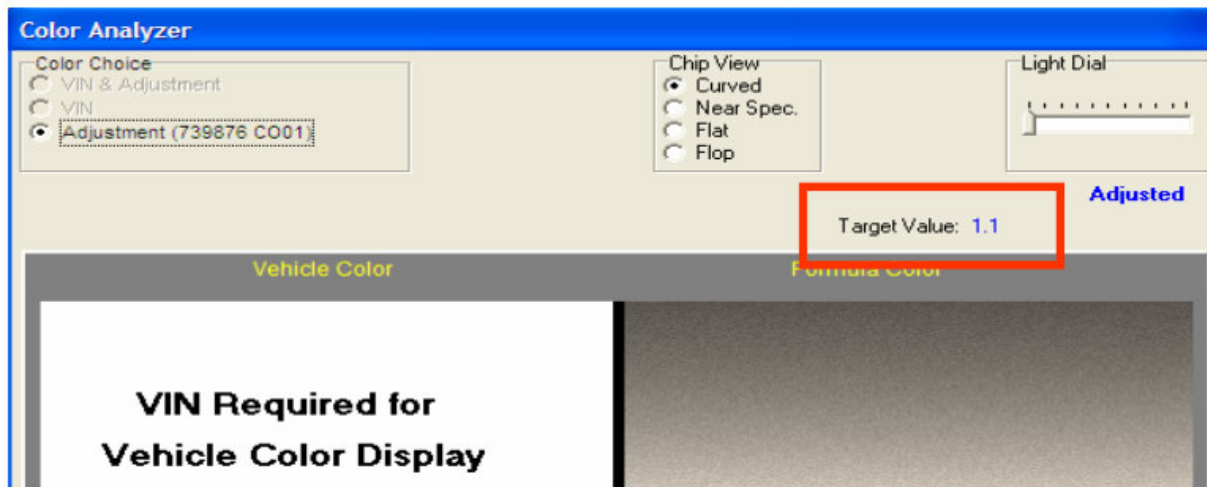
Introducing a New Concept – “Target Value”



- Target Value is a new concept being introduced in Color Proofing to assist the user in determining how close the alternate is to the vehicle (target). The lower the value the better chance of a blendable match. Here are some values to keep in mind:
- If the Target Value is between 0 and 2.0 the formula is considered blendable and the ColorNet will not adjust the formula.
- If the Target Value is between 2.1 and 5.0 the formula probably needs adjusting and ColorNet can adjust the formula if the user chooses to do so.
- If the Target Value is greater than 5.0, the user should probably select another formula!
- CAUTION: Target Value only pertains to the color of the formula and not metallic size!!



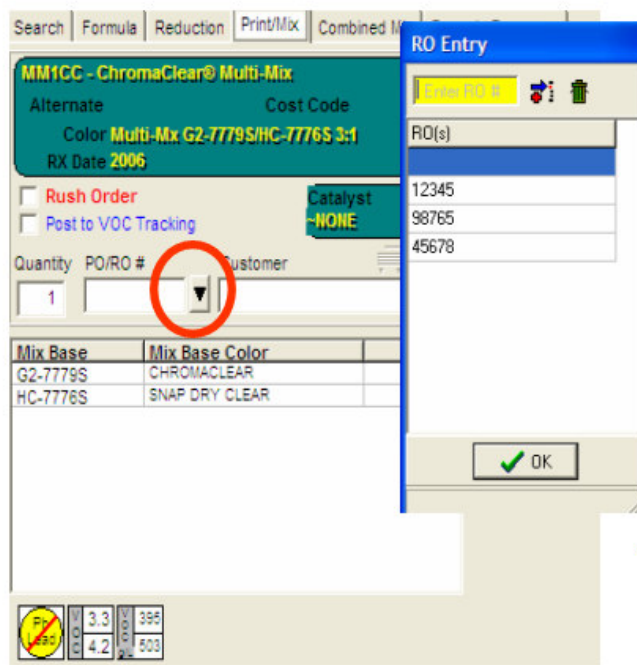
Color Proofing w/o VIN



- Voice of Customer indicated that jobbers perform many searches with out the VIN and miss the “circles” from the old search process. Quite frankly, the circles are now considered old technology and only did a fair job of portraying the quality of match. With the introduction of “Target Value” the jobber now has as a numerical index that more accurately describes the quality of match to the vehicle.
- Remember: a Target Value of 0 – 2.0 should result in a blendable match and a target value of 2.1 to 5.0 will require shading adjustment. If the Target Value is greater than 5.0 the user should choose a different formula.
- CAUTION: Target Value only pertains to the color of the formula and not metallic size!!



Cost Tracking -Multiple RO's



A shop using Cost Tracking can now distribute an equal amount of product (i.e. Primer or clear) to multiple RO's at one time!

This can be accomplished using the Print/Mix or Combined Mix tab.

After selecting the amount the user desire to mix, simply click on the down arrow located next to the PO/RO field. A pop up will appear and the user can type in the PO/RO's to which the product should be allocated.

The quantity selected will be distributed equally among the designated PO/RO's

- If a gallon is mixed, and 4 RO's are indicated then each RO will receive a quart of material.



Special Color Library – Default Quality

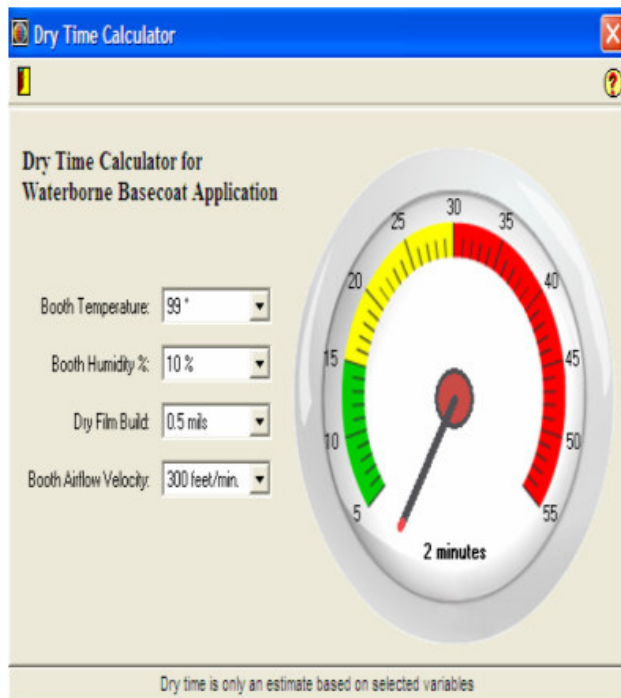
Stock Code F2	Car/Code/Year F3	Cross Reference F4	Alpha Fleet F5	Customer F6
ValueShade F7	Color Tools F8	Product Retrieval F9	Special Color Lib. F10	Mix Queue F11

Formula #	<input type="text"/>	Quality	CHROMAPREMIER BC
Car	Starts With <input type="text"/>		
Mfr. Code	Contains <input type="text"/>		

When a user sets a default quality in system utilities, the default will now apply to the special color library as well as the F2 Tab (Stock Code), F3 Tab (CCY) and the F8 Tab (Color Tools).



Dry Time Calculator for Waterborne Qualities



- This feature is now available for Waterborne qualities in ColorNet.



Cost Tracking Invoice

Provided By DuPont ColorNet®

INVOICE

Date	Invoice #
12/02/2008	26

Customer Name

Make: _____
Model: _____ Year: _____

Repair Order #	Supplier
45678	

Users can now select the option to indicate that the origination of the cost tracking invoice originated from ColorNet.

This default feature can be selected in system utilities > Catframes > cost management > "print provided by label" ...

