

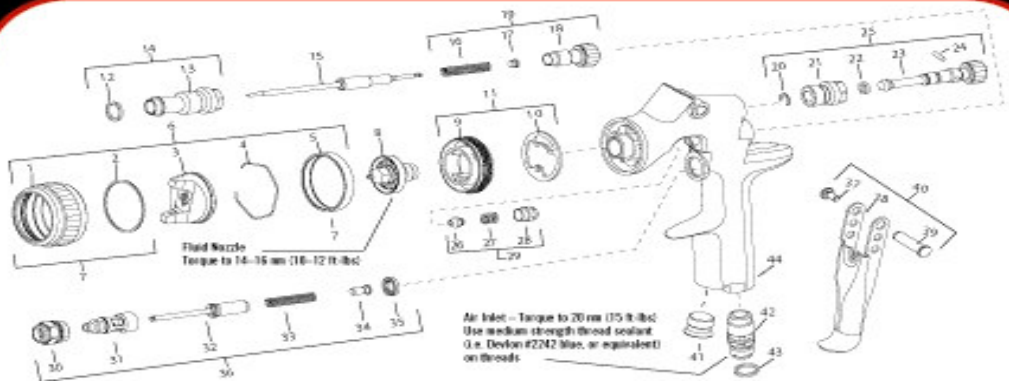
KLINE'S

auto inc.



ITW Finishing Systems and Products

BBB-TEKNA 32 (888-835-6232)
www.TEKNAGUNS.com
©2007 Itarc Tool Works, TX-2007-A-1/07



Ref. No.	Description	Part No.	Qty
1	Air Cap Retaining Ring		1
2	Slip Ring		1
3	Air Cap		1
4	Air Cap Retaining Clip		1
5	Retaining Ring Seal		1
6	Base Cap & Ring (202)	702723	1
6	Clear Cap & Ring (909)	702724	1
7	Air Cap Retaining Ring & Seals	702725	1
8	Fluid Nozzle	See Chart 1	1
9	Air Separator		1
*10	Air Separator Seal (kit of 2)	702726	1
11	Air Separator & Seal Kit	702727	1
*12	Body Bushing Gasket		1
13	Body Bushing		1
14	Body Bushing & Gasket	702728	1
15	Fluid Needle	See Chart 1	1
*16	Needle Spring		1
*17	Needle Spring Pad		1
18	Fluid Adjusting Knob		1
19	Fluid Adjusting Knob, Spring, & Pad Kit	702729	1
*20	Retaining Clip		1
21	Spreader Valve Body		1

Ref. No.	Description	Part No.	Qty
*22	Spreader Valve Seal		1
23	Spreader Valve Adjusting Knob		1
*24	Spreader Valve Pin		1
25	Spreader Valve Assembly	702730	1
*26	Needle Packing		1
*27	Packing Spring		1
28	Packing Nut		1
29	Packing, Spring & Packing Nut Kit	702731	1
30	Air Valve Body		1
31	Air Valve Cage		1
32	Air Valve Poppet		1
33	Air Valve Spring		1
34	Air Valve Spring Pad		1
35	Air Valve Seal		1
36	Air Valve Assembly	702732	1
*37	Trigger Stud Screw (T20 TORX)		1
38	Trigger		1
*39	Trigger Stud		1
40	Trigger, Stud & Screw Kit	702733	1
41	Plug		1
42	Air Inlet	702734	1
43	Color ID Ring Kit (4 Colors)	702735	1
44	Gun Body		1

Air Inlet - Torque to 20 nm (175 ft-lbs)
Use medium strength thread sealant
i.e. Devcon #2742 Blue, or equivalent
on threads

* The TEKNA Spray Gun Repair Kit (702736) contains all the parts indicated with an asterisk.

Fluid Nozzle & Fluid Needle Replacement Parts

Fluid Nozzle Size I.D. (MM)	Fluid Nozzle/ Needle Set No.
1.1	702711
1.2	702712
1.3	702713
1.4	702714

NOTE: When replacing the fluid nozzle or fluid needle, replace both at the same time. Lightly lubricate the threads of the fluid nozzle before reassembling. Torque 14-16 nm (10-12 ft-lbs). Don't over tighten the fluid nozzle. Use 10 NM wrench supplied with gun.



Air Cap Replacement Parts

Air Cap Order No.	Application	Air Cap No.	Recommended Inlet Pressure BAR/PSI	Air Flow LPM/SCFM
702723	Basecoat	202	1.2-1.5 BAR 18-22 PSI	382-434 LPM 13.5-15.5 SCFM
702724	Clearcoat	909	1.5-1.8 BAR 22-26 PSI	396-453 LPM 14-16 SCFM



KLINE'S – KEEPING YOU INFORMED

ALLENTOWN: 1-610-433-3203 / **HAZLETON:** 1-570-454-7616 / **PHILLIPSBURG:** 1-908-859-5911
POTTSVILLE: 1-570-622-4010 / **READING:** 1-610-929-4737 / **SCRANTON:** 1-570-344-8516
STROUDSBURG: 1-570-424-2253